



Float and Thermostatic Steam Traps

FLT 17 (Carbon Steel Body-Cast Iron Cover DN1/2"-1" ; DN 15-DN25)

Description

FLT 17 float and thermostatic (integral air vent) steam traps series are designed for all types of low and high pressure steam heating and process equipment.

Typical applications include unit heaters, heat exchangers, driers, jacketed vessels and all the applications where continuous drainage is essential.

Connections are female screwed or flanged for horizontal or vertical installation.

Main Features

Modulating discharge.

Discharges condensate at steam temperature.

Unaffected by sudden or wide load and pressure changes.

Excellent air discharge (by thermostatic air vent).

Options: Internal strainer (only on horizontal models).
SLR - steam lock release .
Equalizing plug and venting connection.
Saturated and superheated steam.

Use :

AVAILABLE

Models :

FLT 17-4.5 - FLT 17-10 - FLT 17-14 .

Sizes :

1/2", 3/4", 1" - DN15, DN20, DN25.

Connections :

Female screwed ISO 7/1 Rp (BS21)
Flanged DIN. Special flanges upon request.

Installation :

Standard horizontal installation -
flow from right to left FLT17 (R-L)

Upon request:

-horizontal installation with the flow from left to right FLT17 (L-R)

-vertical installation with the flow from top to bottom FLT17 (V)

See IMI, installation and maintenance instructions.

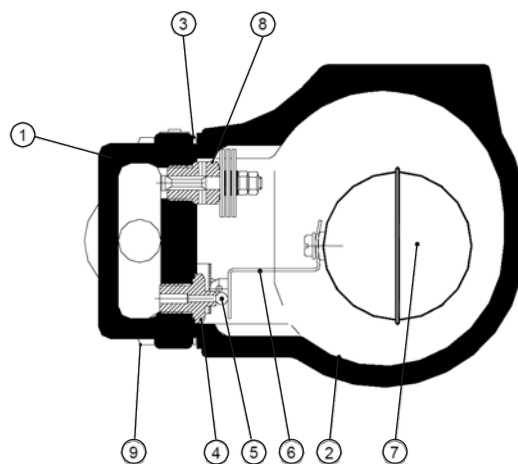
PMA :Max.allowable pressure 16 bar

TMA :Max.allowable temperature 250 °C

PMO :Max.operating pressure 14 bar

TMO :Max.operating temperature 198 °C

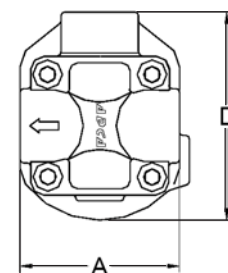
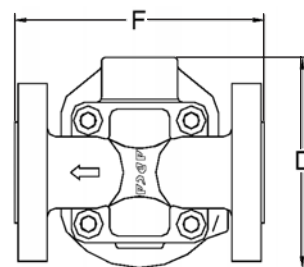
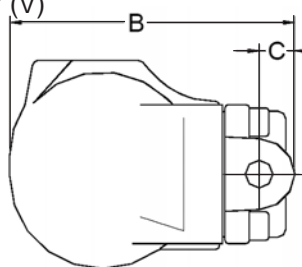
How to order: i.e. FLT17-14 DN 15 DIN.



Materials:

| Pos.NR. | Designation | Material |
|---------|-------------|-----------------|
| 1 | Body | GS C-25 |
| 2 | Cover | GGG 40 |
| 3 * | Gasket | Non asbestos |
| 4 * | Seat | AISI 410 |
| 5 * | Valve | AISI 410 |
| 6 * | Lever | AISI 304 |
| 7 * | Float | AISI 304 |
| 8 * | Air Vent | Stainless Steel |
| 9 | Bolts | Steel 8.8 |

* Available Spare Parts



Max.differential pressure
FLT 17- 4.5 - 4.5 bar
FLT 17 - 10 - 10 bar
FLT 17- 14 - 14 bar

DIMENSIONS (mm)

| SIZE DN | Screwed Ends | | | | | DIN Flanges | |
|------------|--------------|-----|----|-----|--------------|-------------|--------------|
| | A | B | C | D | WEIGHT Kg | F | WEIGHT Kg |
| 1/2" | 95 | 178 | 23 | 128 | 5.2 | 150 | 6.7 |
| 3/4" | 95 | 178 | 23 | 128 | 5.2 | 150 | 7.2 |
| 1" | 95 | 178 | 23 | 128 | 5.2 | 160 | 7.7 |

FLOW RATE CAPACITY IN Kg/h

| MODEL | SIZE | DIFFERENTIAL PRESSURE (bar) | | | | | | | | | | | | | |
|-----------|----------|-----------------------------|-----|-----|-----|-----|-----|-----|-----|-----|-----|-----|-----|-----|--|
| | | 0.5 | 1 | 1.5 | 2 | 3 | 4.5 | 6 | 7 | 8 | 9 | 10 | 12 | 14 | |
| FLT17-4,5 | 1/2"- 1" | 200 | 280 | 320 | 360 | 400 | 495 | | | | | | | | |
| FLT17- 10 | 1/2"- 1" | 110 | 140 | 175 | 190 | 230 | 280 | 300 | 330 | 350 | 390 | 405 | | | |
| FLT17- 14 | 1/2"- 1" | 70 | 100 | 120 | 140 | 155 | 190 | 210 | 220 | 225 | 230 | 260 | 280 | 300 | |

Recommended safety factor : continuous 1.2 - 1.5 ; discontinuous flow 2 - 3 .



INSTALLATION AND MAINTENANCE INSTRUCTIONS

FLT17

FLOAT & THERMOSTATIC STEAM TRAPS

GENERAL

1. These instructions must be carefully read before any work involving products supplied by VALSTEAM ADCA ENGINEERING S.A. is undertaken.
2. The installation procedure is a critical stage in a life of a steam trap and care should be taken to avoid damage to the trap or equipment.

Warning !

- At start up , the presence of small particles in the water (dirt,scale,weld splatters,etc) may cause an unperfect closure of the seat . If this occur, proceed to an accurate cleaning.
- Do not touch the equipment without appropriate protection during working operation because it may conduct heat if the used fluid is at high temperature.
- Before starting maintenance be sure that the equipment is not pressurized or hot .
- The equipments must be used within the working temperature and pressure limits laid down for them, otherwise they may fail (refer to nameplate and/or IS- Information Sheet).
- Do not remove the nameplate attached to the equipment. Serial number and other useful information is stamped on it.

INSTALLATION

1. Before to install remove plastic covers placed on flanges or connection ends. The equipment has an arrow or Inlet/Outlet designations. Be sure that it will be installed on the appropriate direction.
2. Install the steam trap in the point of the system, where the condensate tends to collect. It must be installed with the float lever in horizontal plane, so that it rises and falls vertically. An ADCA strainer should be installed upstream of the trap.

Limiting conditions FLT 17 :

| | |
|--------------------------------|--------|
| PMA :Max.allowable pressure | 16 bar |
| TMA: Max.allowable temperature | 250 °C |
| PMO: Max.operating pressure | 14 bar |
| TMO: Max.operating temperature | 198 °C |

Max.differential pressure :

| |
|----------------------|
| FLT 17-4.5 - 4.5 bar |
| FLT 17 -10 - 10 bar |
| FLT 17- 14 - 14 bar |

MAINTENANCE

1. We recommend that the float steam traps are serviced as necessary. Steam traps should be checked periodically (at least yearly), to verify that they are operating correctly and to clean the internal parts and screen (if any).
2. When reassembling make sure that all gasket faces are clean and always use a new gasket. Tighten cover bolts uniformly in a diagonal sequence.
3. For further information refer to the relevant FLT17 brochure or consult our Sales Office.

CE Marking :

This product have been designed for use on steam and water wich are in Group 2 of the PED-European Pressure Equipment Directive 97/23/EC and it comply with those requirements.
The product fall within category SEP and must not be CE marked.

GROUP 2 GASES CATEGORIES

| MODEL | SIZES | Category |
|---------|-------|----------|
| FLT 17 | ALL | SEP |
| FLT17HC | DN 25 | SEP |

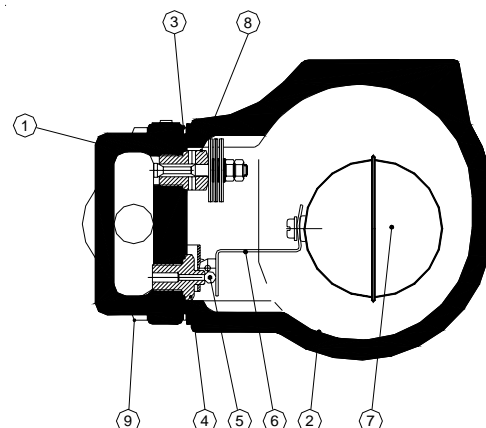
PARTS LIST FOR FLT 17- STEAM TRAPS DN 1/2"- 1", DN15-DN25

| Code | Designation | SizeTrap | Pos.Nr. | Qty. |
|---------------|------------------------------------|-----------|-----------|------|
| A.92.1502.015 | Valve,seat,float&gasket D.P.4,5bar | DN1/2"-1" | 3,4,5,6,7 | 1Set |
| A.92.1503.015 | Valve,seat,float&gasket D.P.10 bar | DN1/2"-1" | 3,4,5,6,7 | 1Set |
| A.92.1504.015 | Valve,seat,float&gasket D.P.14 bar | DN1/2"-1" | 3,4,5,6,7 | 1Set |
| A.92.1502.115 | Float & gasket | DN1/2"-1" | 3,7 | 1Set |
| A.92.1502.215 | Air vent & gasket | DN1/2"-1" | 3,8 | 1Set |

Recommended tightening torques FLT17 DN 1/2"-1", DN15-DN25

| Pos.Nr. | Size | Nm |
|---------|---------|-------|
| 4 | 1/2"-1" | 50-55 |
| 8 | 1/2"-1" | 50-55 |
| 9 | 1/2"-1" | 40-45 |

Remarks: Tighten cover bolts uniformly.

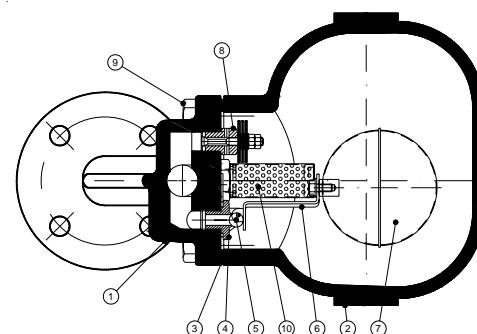

PARTS LIST FOR FLT 17HC STEAM TRAPS DN 1", DN25

| Code | Designation | SizeTrap | Pos.Nr. | Qty. |
|---------------|------------------------------------|----------|-----------|------|
| A.92.1502.025 | Valve,seat,float&gasket D.P.4,5bar | DN1" | 3,4,5,6,7 | 1Set |
| A.92.1503.025 | Valve,seat,float&gasket D.P.10 bar | DN1" | 3,4,5,6,7 | 1Set |
| A.92.1504.025 | Valve,seat,float&gasket D.P.14 bar | DN1" | 3,4,5,6,7 | 1Set |
| A.92.1502.125 | Float & gasket | DN1" | 3,7 | 1Set |
| A.92.1502.225 | Air vent& gasket | DN1" | 3,8 | 1Set |

Recommended tightening torques FLT17HC DN 1", DN25

| Pos.Nr. | Size | Nm |
|---------|------|-------|
| 4 | 1" | 50-55 |
| 8 | 1" | 50-55 |
| 9 | 1" | 40-45 |

Remarks: Tighten cover bolts uniformly.


PARTS LIST FOR FLT 17 STEAM TRAPS DN DN40-DN50

| Code | Designation | SizeTrap | Pos.Nr. | Qty. |
|---------------|------------------------------------|------------|-----------|------|
| A.92.1502.040 | Valve,seat,float&gasket D.P.4,5bar | DN11/2"-2" | 3,4,5,6,7 | 1Set |
| A.92.1503.040 | Valve,seat,float&gasket D.P.10 bar | DN11/2"-2" | 3,4,5,6,7 | 1Set |
| A.92.1504.040 | Valve,seat,float&gasket D.P.14 bar | DN11/2"-2" | 3,4,5,6,7 | 1Set |
| A.92.1502.140 | Float & gasket | DN11/2"-2" | 3,7 | 1Set |
| A.92.1502.240 | Air vent& gasket | DN11/2"-2" | 3,8 | 1Set |

Recommended tightening torques FLT17 DN40-DN50

| Pos.Nr. | Size | Nm |
|---------|----------|--------------|
| 4 | 11/2"-2" | 10-15 (4xM6) |
| 8 | 11/2"-2" | 50-55 |
| 9 | 11/2"-2" | 80-85 |

Remarks: Tighten cover bolts uniformly.

